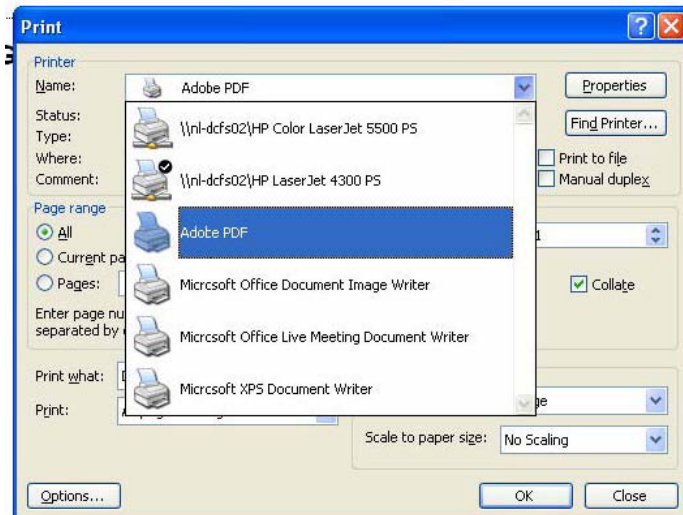
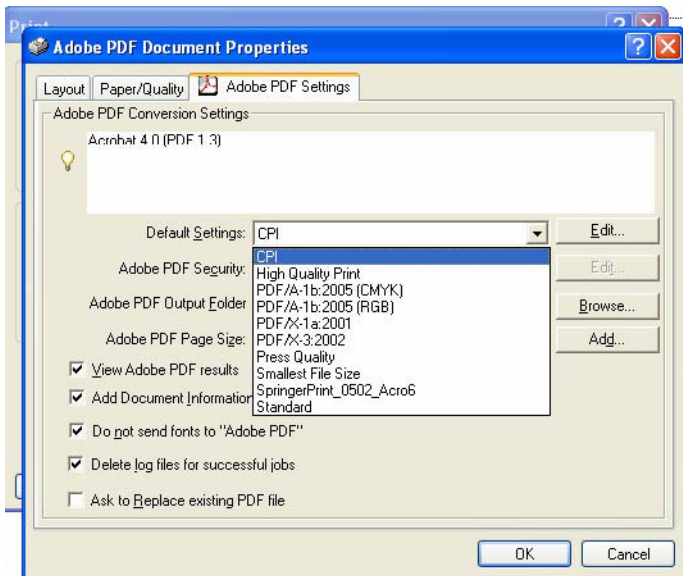


Guidelines to create PDF

1. Store the CPI joboptions in the following directory on your
C:\Program Files\Adobe\Acrobat 7.0\Distillr\Settings
2. Go to the print option in the file menu and choose Adobe PDF as printer.
Screen below should be visible



3. Click on properties before you click on OK. Screen below should be visible>



4. Choose CPI in the default settings and click on OK
5. Adobe PDF print option will be visible and click on OK
6. PDF file with CPI option will be generated